

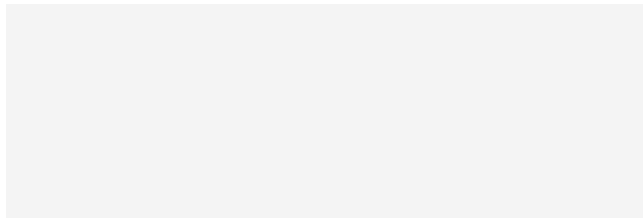
m o o o i

Cloud Sofa

MARCEL WANDERS



Have you ever wished that you could fall into the softness of a white cloud that looks like cotton candy? After a brief reality check this daydream is forgotten, until you catch a glimpse of the Cloud sofa by Marcel Wanders, a composition of rounded shapes & soft white cushions. The sofa is available in a wide range of colours and carries the comforting sensation of falling into a fluffy cloud on a bright sunny day.



Detailing



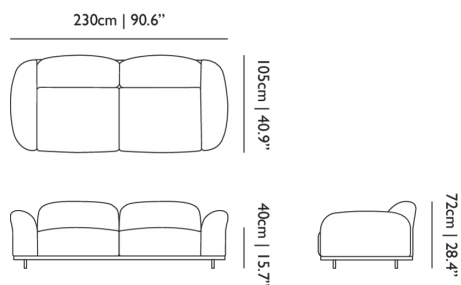
The finish of the upholstery buttons depend on your choice of fabric and colour.

Colours

CAT 1

Cloud Sofa / Sofa

Dimensions



Product

WIDTH 230cm | 90.6"

HEIGHT 72cm | 28.3"

DEPTH 105cm | 41.3"

Packaging

WIDTH 103.5cm | 40.7"

HEIGHT 80cm | 31.5"

CUBAGE 2.07m³ | 73.1ft³

LENGTH 250cm | 98.4"

WEIGHT 113kg | 249.12lbs

Technical

ADDITIONAL

Pillows available seperately

MATERIAL

Steel frame, moulded foam and dacron.

HEIGHT ARMREST

68cm | 26.8"

SEAT HEIGHT

41cm | 16.1"

SEAT WIDTH

176cm | 69.3"

SEAT DEPTH

69cm | 27.2"

SEAT HEIGHT 2

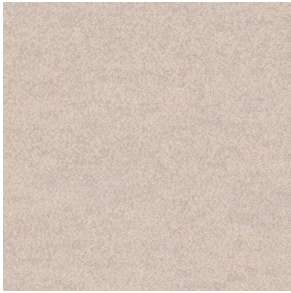
37cm | 14.6"

SEATING CAPACITY

3

Upholstery

ARDA (available in 12 colours)



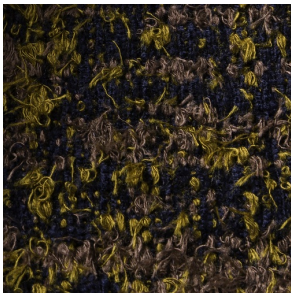
ABRASION

50000 martindale
lightfastness 5 - 6
pilling 4 - 5

FIRE RESISTANCE

BS 5852 - Ignition source
0 (Cigarette)
BS 5852 - Ignition source
5 (Crib 5)
BS 5852 - Ignition source
1 (Match flame equivalent)
EN 1021-1 (Cigarette)
EN 1021-2 (Match)
TB 117-2013
EU Ecolabel

Bearded Leopard (available in 3 colours)



COMPOSITION

77% CV, 15% PES, 7% CO,
1% PA

ABRASION

15000 martindale
lightfastness 4 - 6
pilling 4

Calligraphy Bird (available in 4 colours)



COMPOSITION

64% CV, 21% PES, 15%
CO

ABRASION

50000 martindale
lightfastness 4 - 6
pilling 5

Dodo Pavone (available in 3 colours)



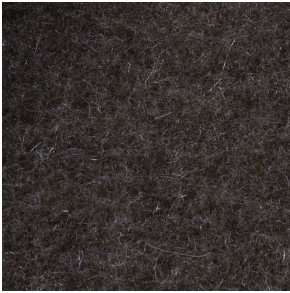
COMPOSITION

12% CO, 88% PES

ABRASION

40000 martindale
lightfastness 5
pilling 4 - 5

Blushing Sloth Melange Mohair (available in 1 colours)



COMPOSITION

85% WV, 15% WM

ABRASION

15000 martindale
lightfastness 4 - 6
pilling 2 - 3

Blushing Sloth Woolly Mohair (available in 1 colours)



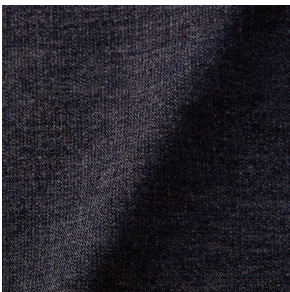
COMPOSITION

24% PES, 15% PA, 8% CO,
24% WM, 29% WV

ABRASION

40000 martindale
lightfastness 4 - 6
pilling 3 - 4

LISCIO (available in 11 colours)



COMPOSITION

35% WO, 35% CV, 21%
CO, 9% PA

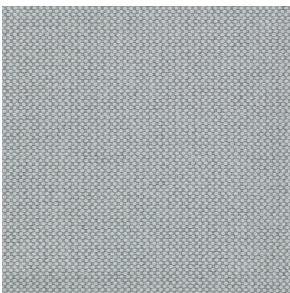
ABRASION

30000 martindale
lightfastness 4 - 6
pilling 4

FIRE RESISTANCE

TB 117-2013

MERIT (available in 43 colours)



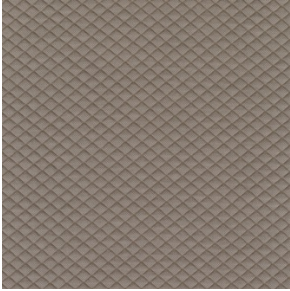
COMPOSITION

24% PES, 76%

ABRASION

85000 martindale
lightfastness 7
pilling 4

MOSAIC 2 (available in 15 colours)



COMPOSITION

58% PES, 27% WV, 9% PA,
6% EA

ABRASION

100000 martindale
lightfastness 6 - 7
pilling 4 - 5

PALETTE (available in 24 colours)



COMPOSITION

42% CO, 29% WO, 29%
TL

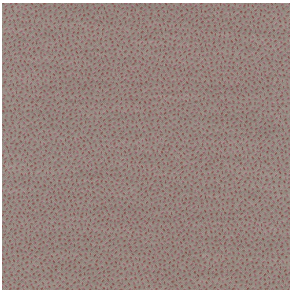
ABRASION

45000 martindale
lightfastness 4 - 5
pilling 3 - 3

FIRE RESISTANCE

BS 5852 - Ignition source
0 (Cigarette)
TB 117-2013
BS 5852 - Ignition source
5 (Crib 5)

SPRINKLES (available in 23 colours)



ABRASION

80000 martindale
lightfastness 7
pilling 4

FIRE RESISTANCE

EU Ecolabel
BS 5852 - Ignition source
0 (Cigarette)
BS 5852 - Ignition source
5 (Crib 5)
BS 5852 - Ignition source
1 (Match flame equivalent)
EN 1021-1 (Cigarette)
EN 1021-2 (Match)
TB 117-2013